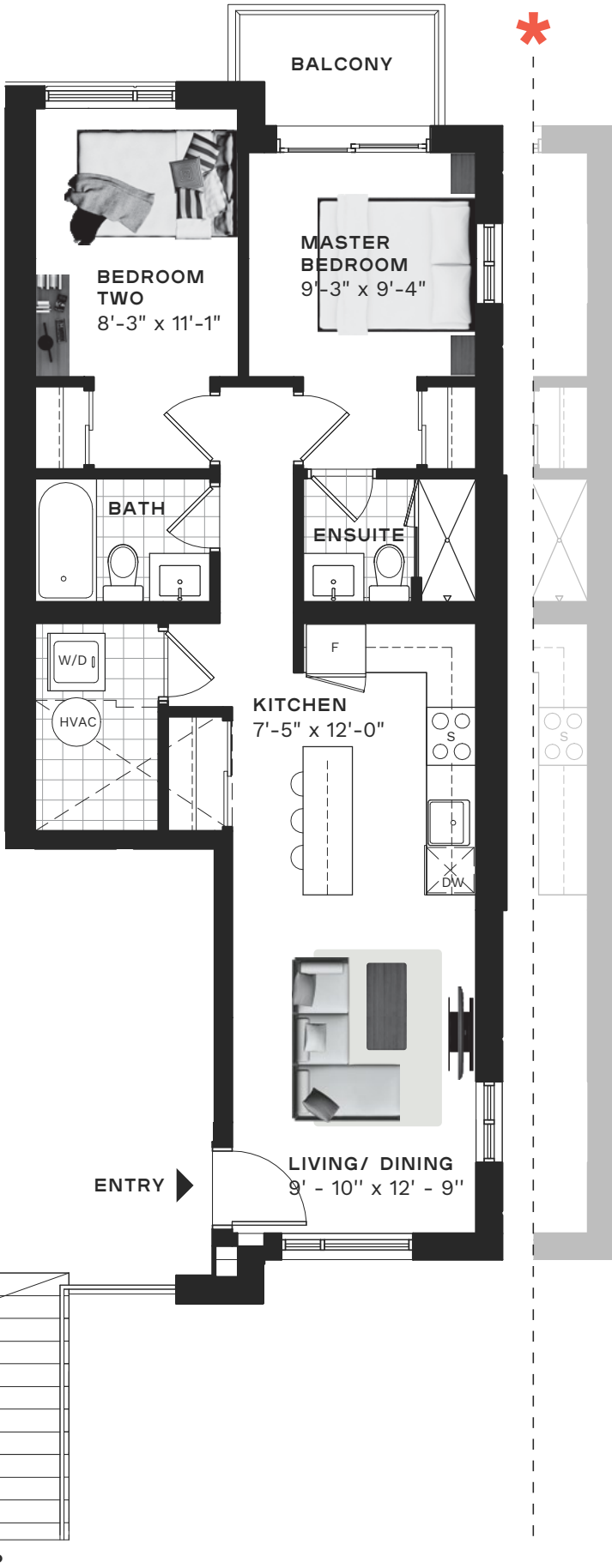


Easton

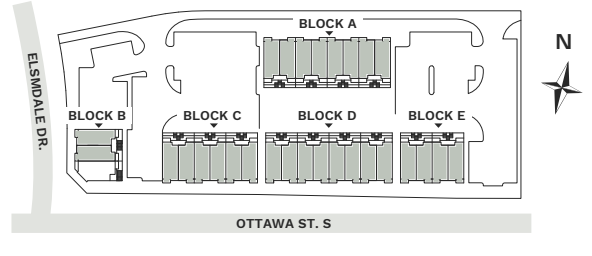
SINGLE STOREY
780 SQ. FT.

2 BEDROOM
MAIN FLOOR MODEL TYPE

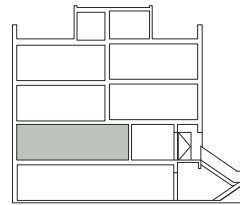


SITE PLAN:

■ = UNIT LOCATION*



BUILDING CROSS SECTION:



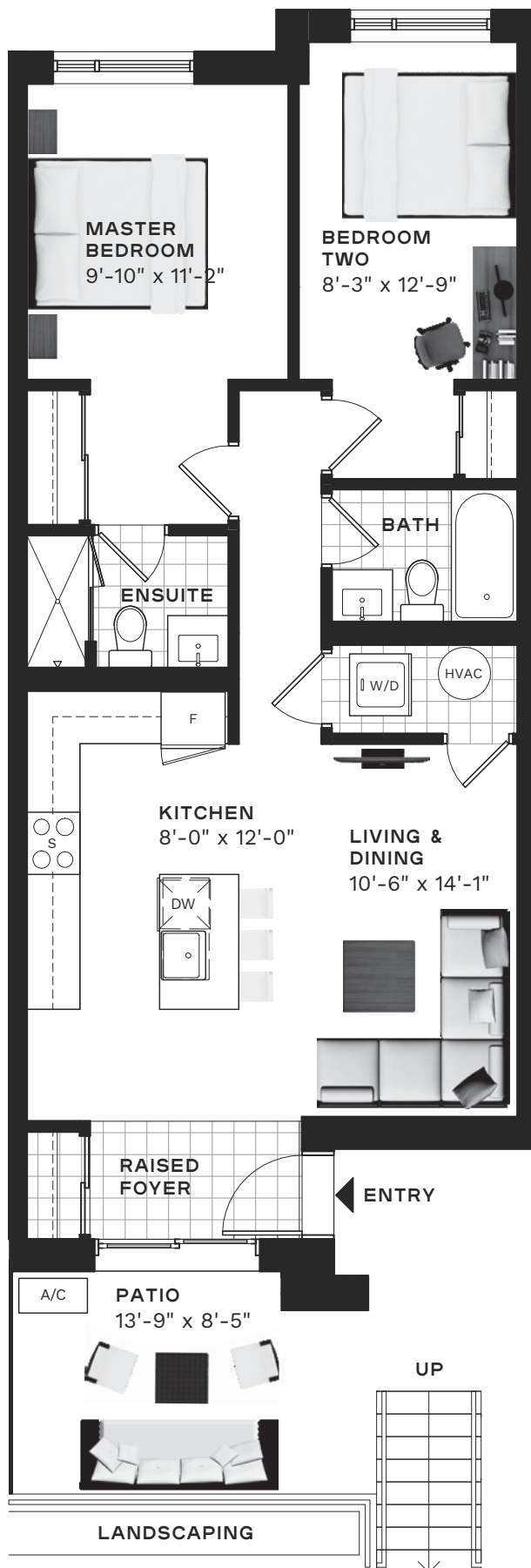
* No windows on Block C East End, Block D East and West End, Block E West End and all interior units. Interior unit dishwasher and sink located are on the island.

‡ Interior unit configurations of the Easton suite total 788 sqft.

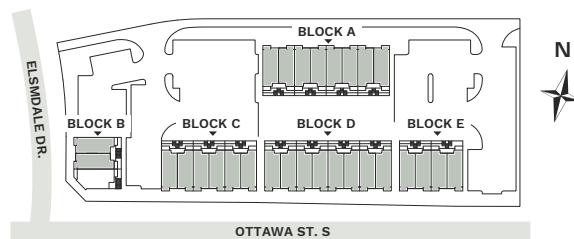
Bradley

SINGLE STOREY
885 SQ. FT.

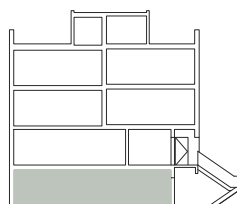
2 BEDROOM
LOWER FLOOR MODEL TYPE



SITE PLAN: ■ = UNIT LOCATION*

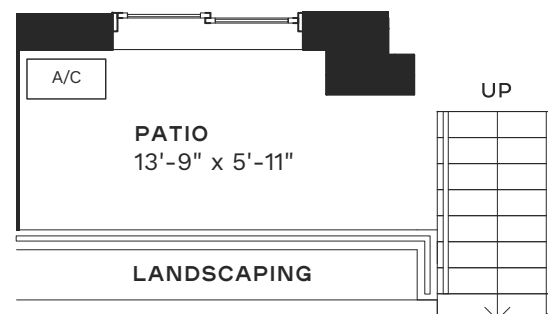


BUILDING CROSS SECTION:



* End unit configurations of the Bradley suite total 877 sqft.

PATIO LAYOUT FOR BLOCK B:



Actual usable space may vary from stated floor plan area. All dimensions are approximate. Layout may be reverse of the unit purchased. Direction of door swings and/or slides may be opposite of what is indicated. E. & O.E.

Mason

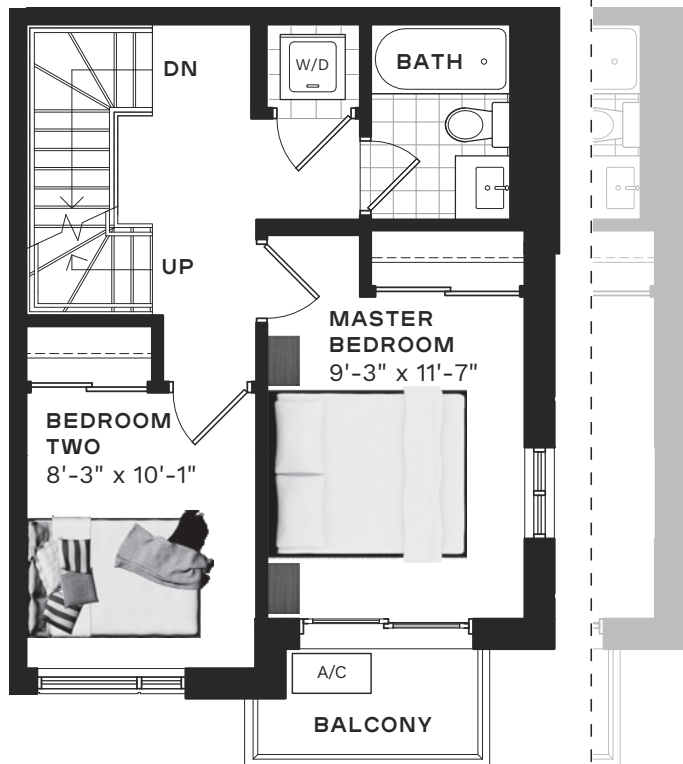
TWO STOREY
1,034 SQ. FT.

2 BEDROOM

2ND AND 3RD FLOOR MODEL TYPE + ROOFTOP MECHANICAL ROOM

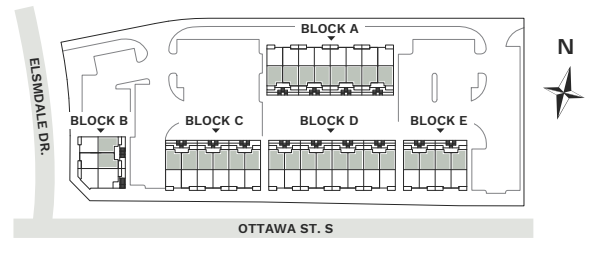


THIRD LEVEL

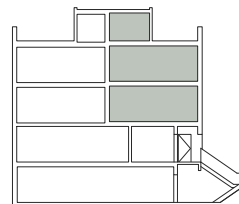


SITE PLAN:

■ = UNIT LOCATION‡



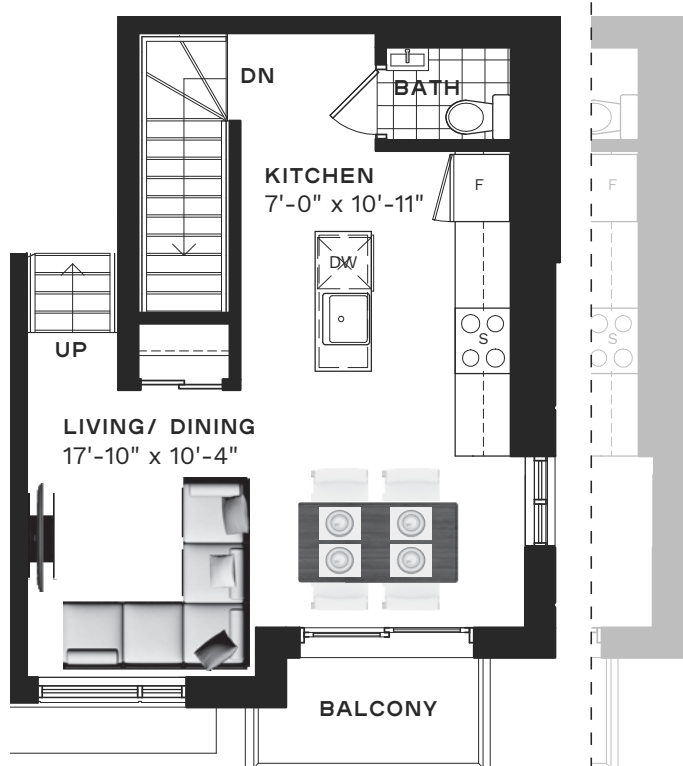
BUILDING CROSS SECTION:



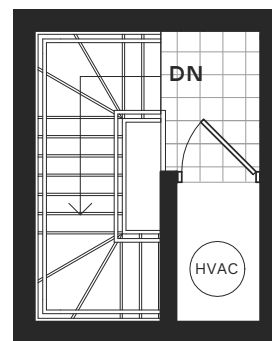
* No windows on Block C East End, Block D East and West End, Block E West End and all interior units.

‡ Interior unit configurations of the Mason suite total 1,040 sqft.

SECOND LEVEL

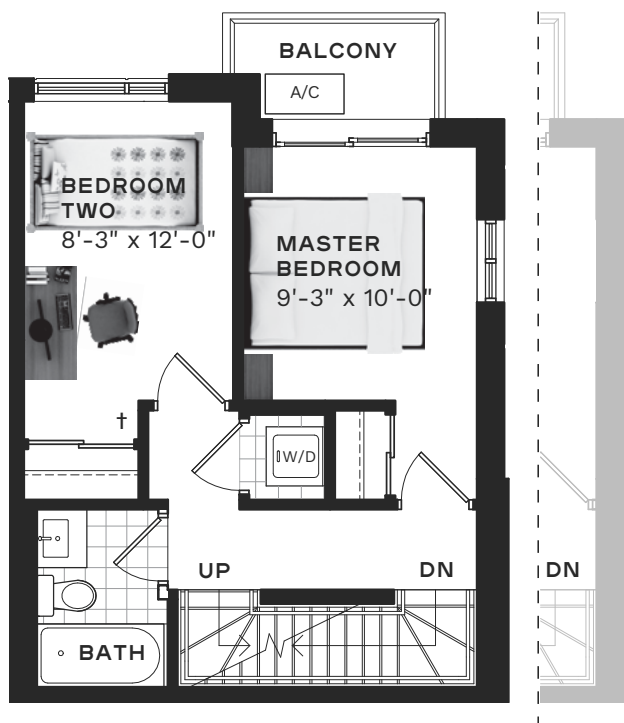


ROOFTOP MECHANICAL ROOM



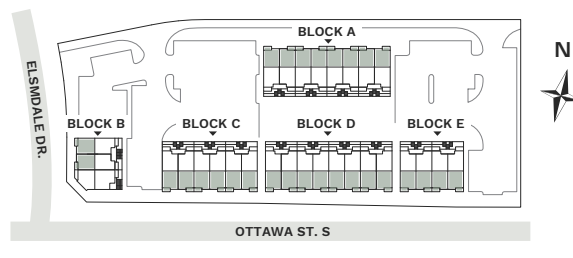
Actual usable space may vary from stated floor plan area. All dimensions are approximate. Layout may be reverse of the unit purchased. Direction of door swings and/or slides may be opposite of what is indicated. E. & O.E.

THIRD LEVEL

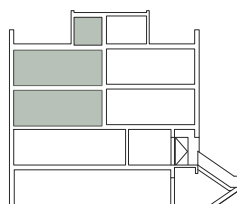


SITE PLAN:

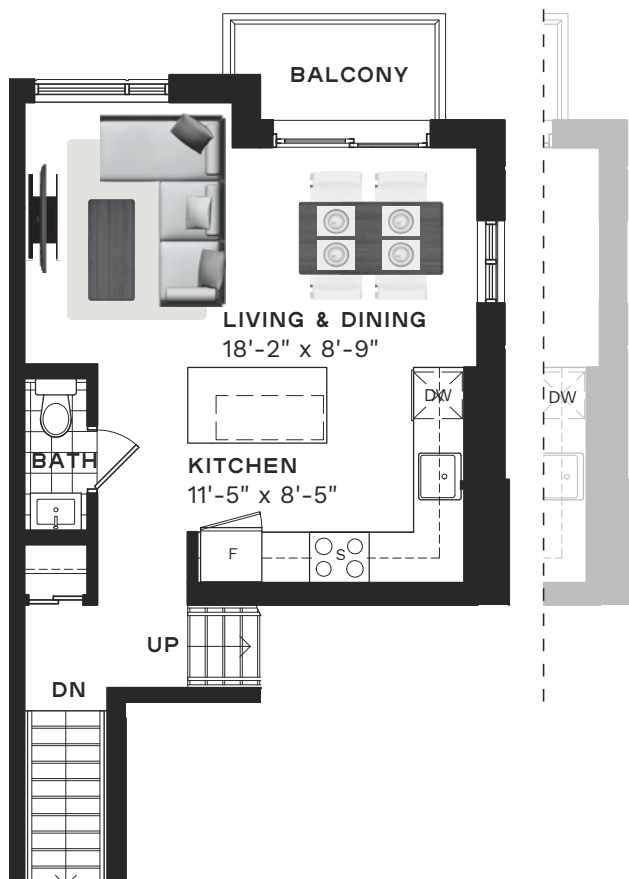
■ = UNIT LOCATION*



BUILDING CROSS SECTION:



SECOND LEVEL

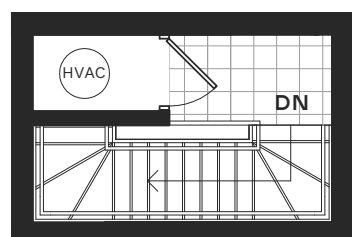


* No windows on Block C East End, Block D East and West End, Block E West End and all interior units.

† Ryder interior unit bedroom two entrance and closet configuration opposes laundry closet.

‡ Interior unit configurations of the Ryder suite total 1,134 sqft.

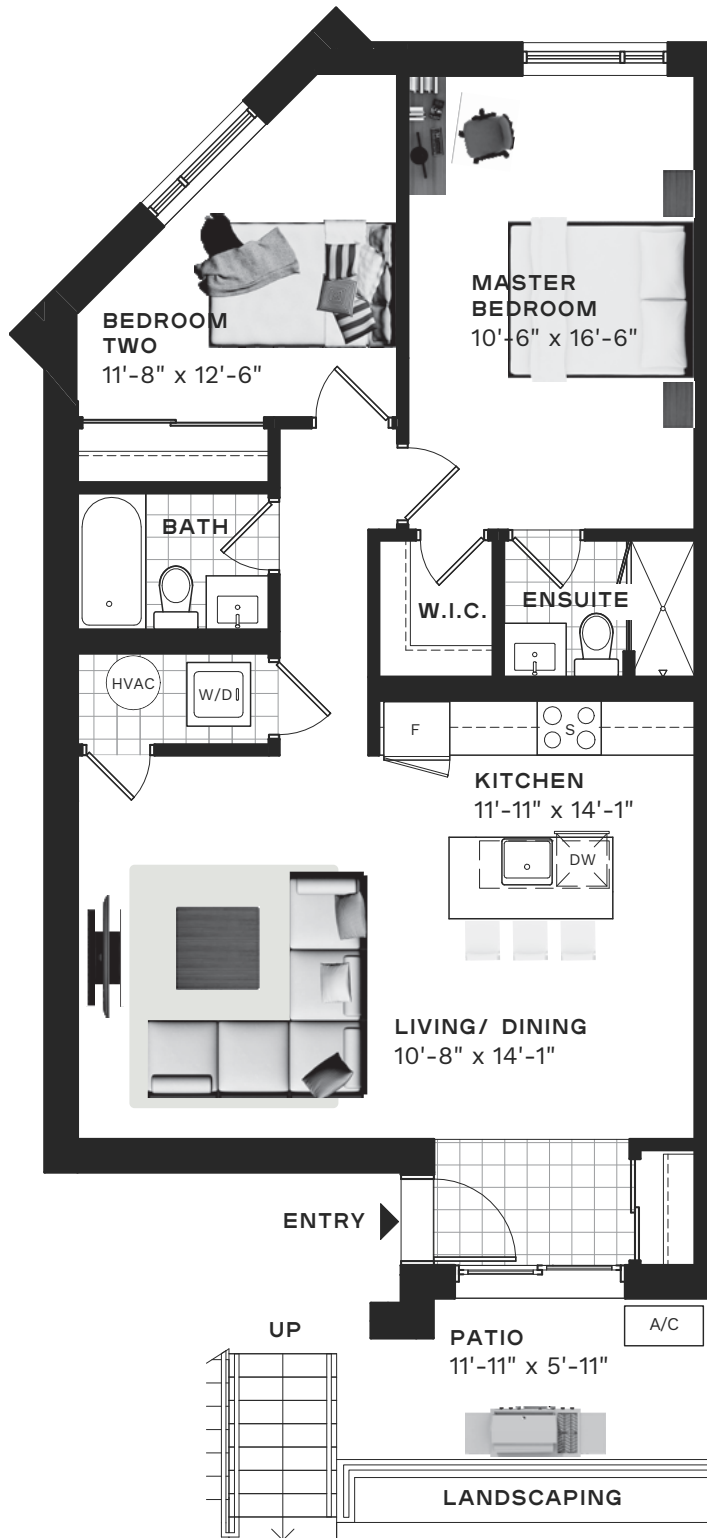
ROOFTOP MECHANICAL ROOM



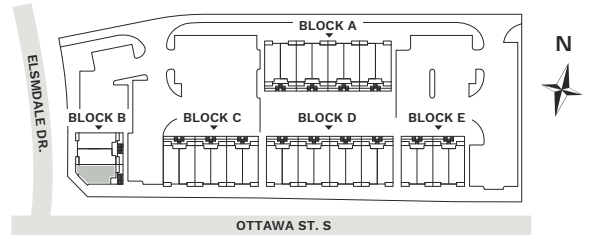
Tanner

SINGLE STOREY
1,021 SQ. FT.

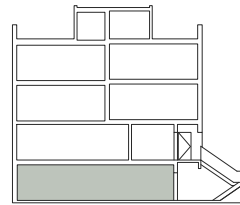
2 BEDROOM
LOWER FLOOR MODEL TYPE



SITE PLAN: ■ = UNIT LOCATION



BUILDING CROSS SECTION:

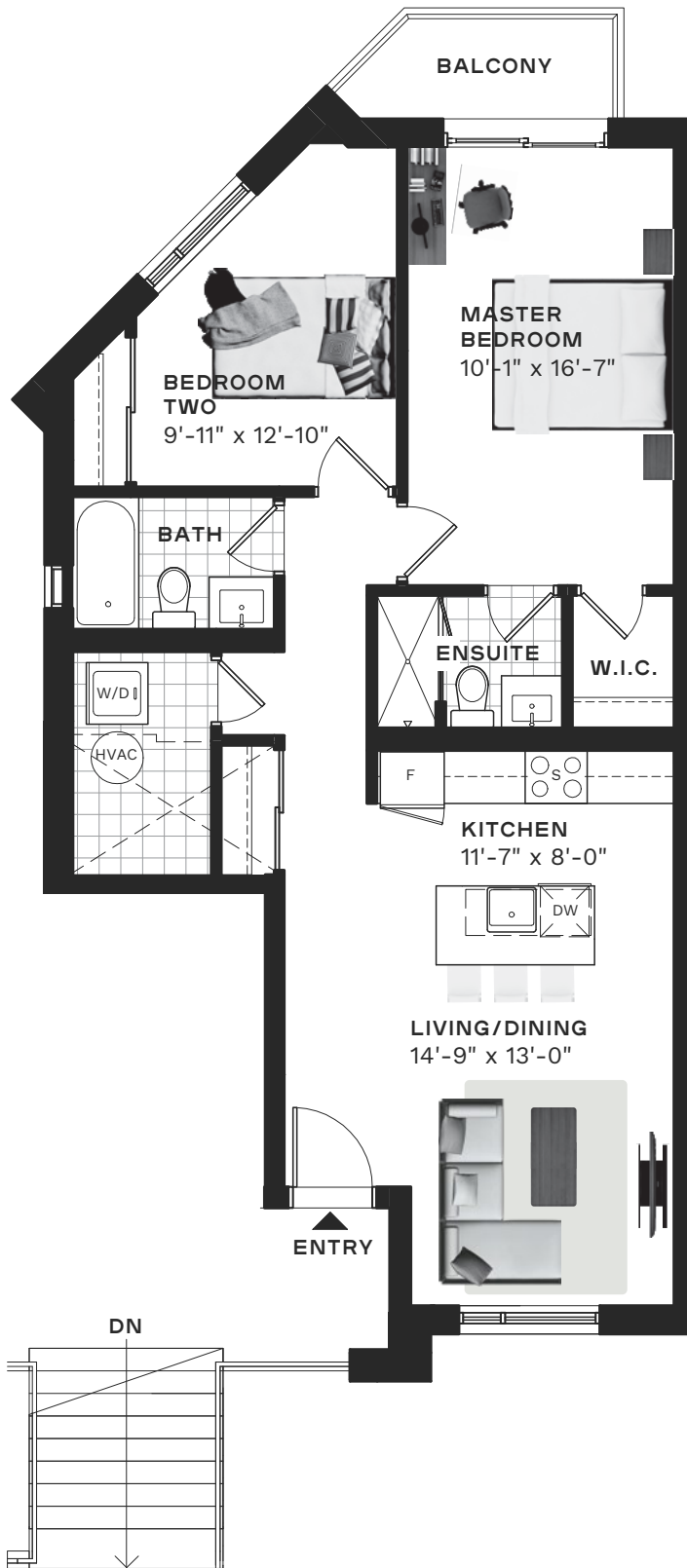


Actual usable space may vary from stated floor plan area. All dimensions are approximate. Layout may be reverse of the unit purchased. Direction of door swings and/or slides may be opposite of what is indicated. E. & O.E.

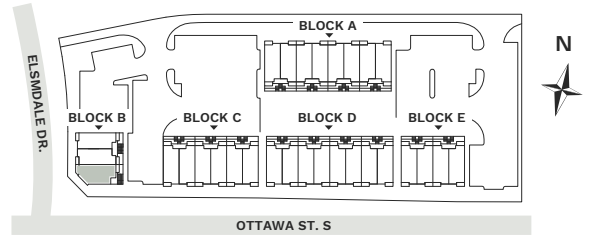
Colton

SINGLE STOREY
919 SQ. FT.

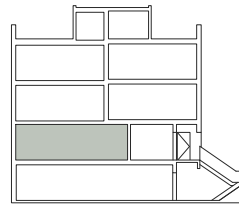
2 BEDROOM
MAIN FLOOR MODEL TYPE



SITE PLAN: ■ = UNIT LOCATION



BUILDING CROSS SECTION:



Actual usable space may vary from stated floor plan area. All dimensions are approximate. Layout may be reverse of the unit purchased. Direction of door swings and/or slides may be opposite of what is indicated. E. & O.E.

Parker

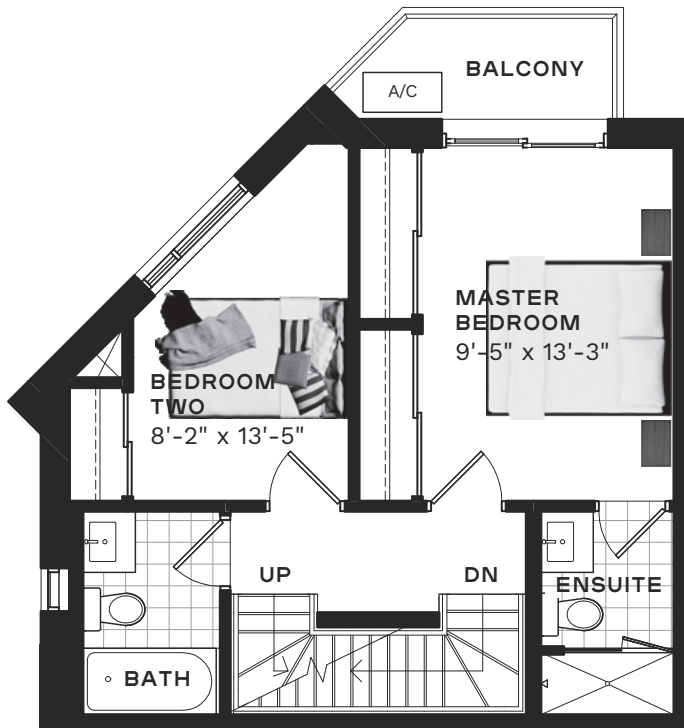
TWO STOREY
1,240 SQ. FT.

2 BEDROOM

2ND AND 3RD FLOOR MODEL TYPE + ROOFTOP MECHANICAL ROOM

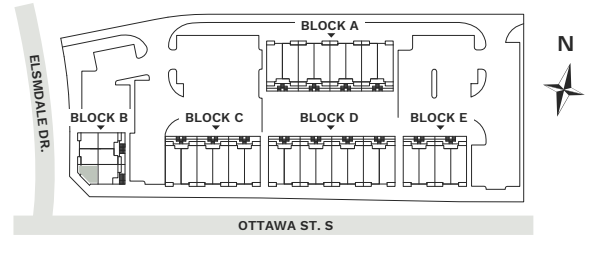


THIRD LEVEL

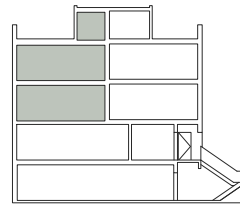


SITE PLAN:

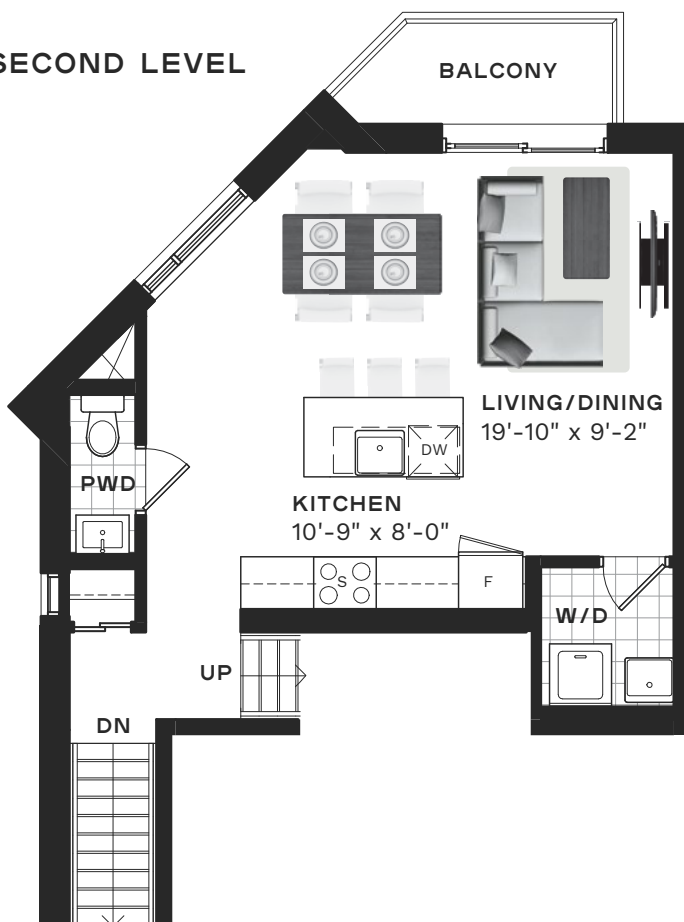
■ = UNIT LOCATION



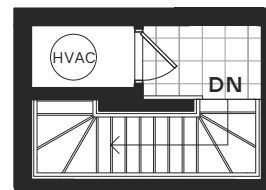
BUILDING CROSS SECTION:



SECOND LEVEL



ROOFTOP MECHANICAL ROOM



Actual usable space may vary from stated floor plan area. All dimensions are approximate. Layout may be reverse of the unit purchased. Direction of door swings and/or slides may be opposite of what is indicated. E. & O.E.

Graydon

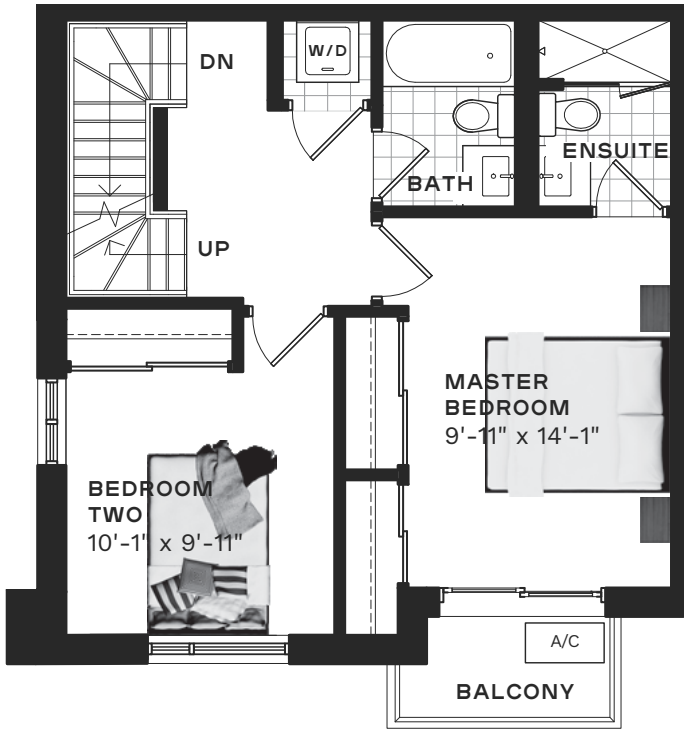
TWO STOREY
1,276 SQ. FT.

2 BEDROOM

2ND AND 3RD FLOOR MODEL TYPE + ROOFTOP MECHANICAL ROOM

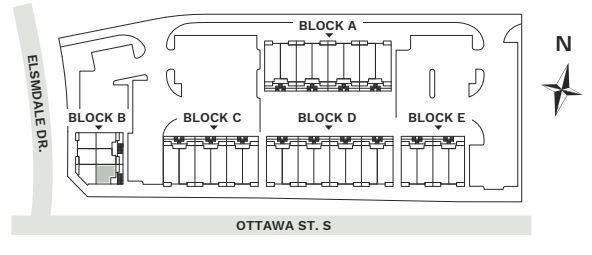


THIRD LEVEL

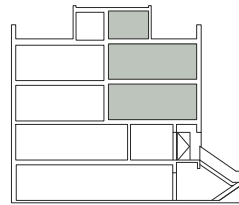


SITE PLAN:

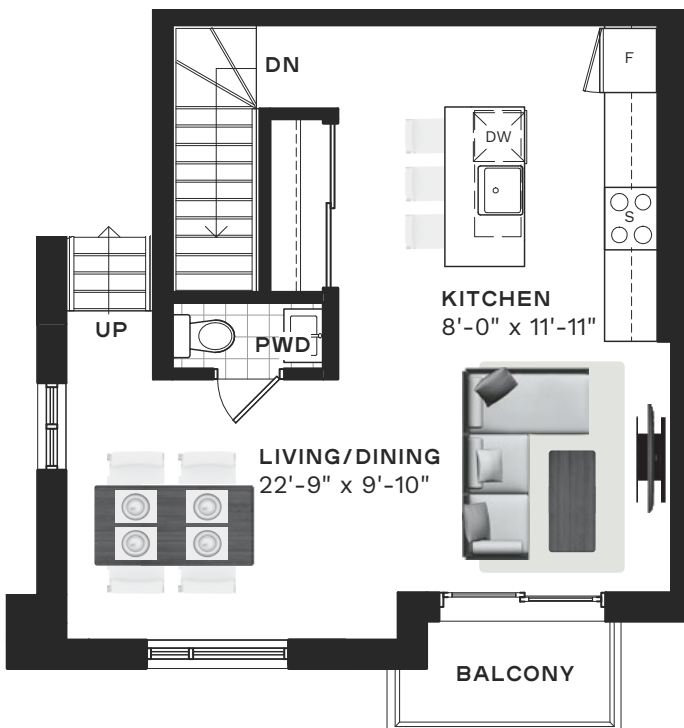
■ = UNIT LOCATION



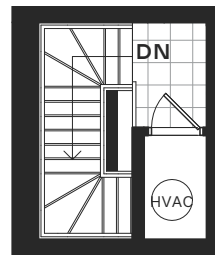
BUILDING CROSS SECTION:



SECOND LEVEL



ROOFTOP MECHANICAL ROOM



Actual usable space may vary from stated floor plan area. All dimensions are approximate. Layout may be reverse of the unit purchased. Direction of door swings and/or slides may be opposite of what is indicated. E. & O.E.